

HILLSIDE CASTLE

- Two play terraces - one large upper terrace and a smaller lower terrace
- Ramp connecting upper terrace and parking to lower play terrace
- Ramp connecting lower play terrace to restroom and lower parking
- All new retaining walls

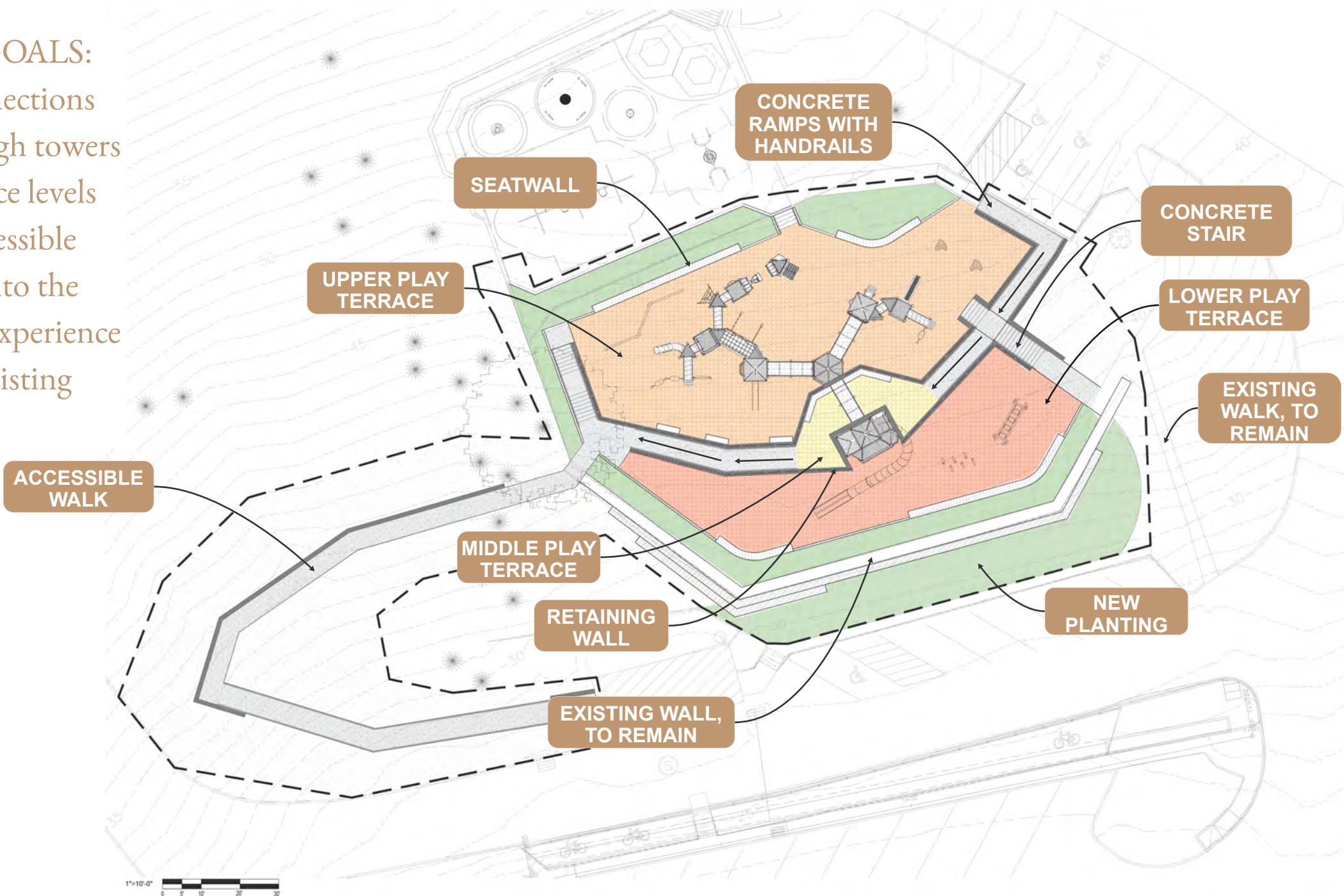
WHAT WE HEARD:

- Study keeping the existing retaining wall
- Study an accessible route on the west side of the site to connect to the restroom
- Play equipment should be equal to the existing structure in quantity, scale, complexity

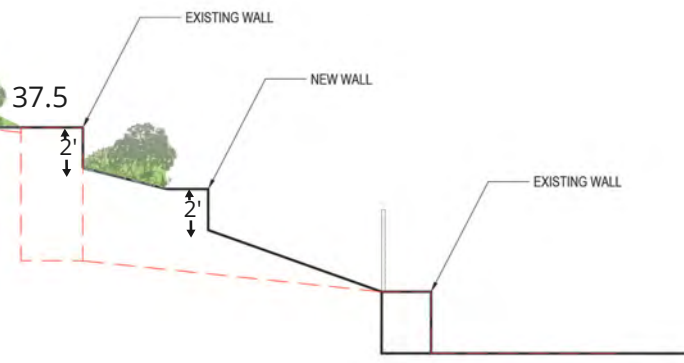
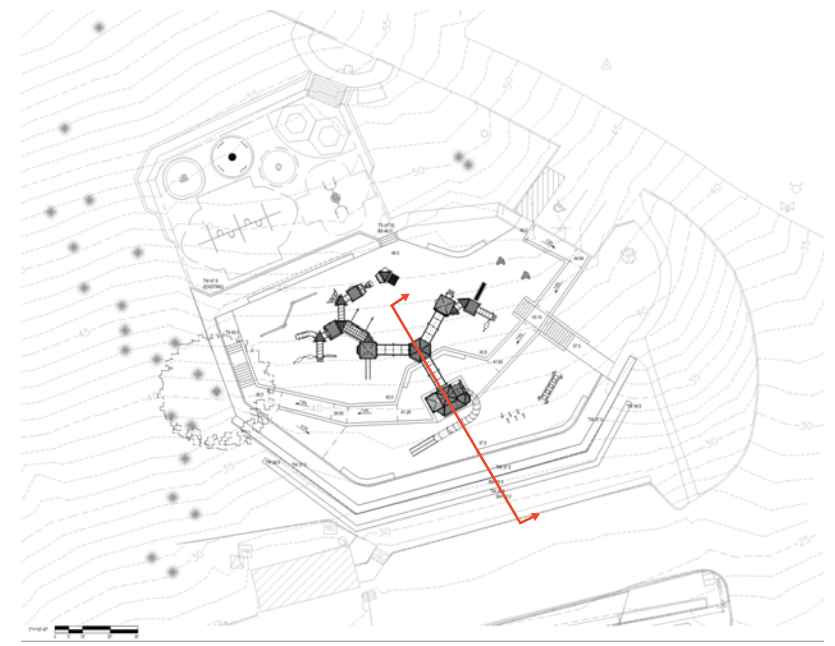
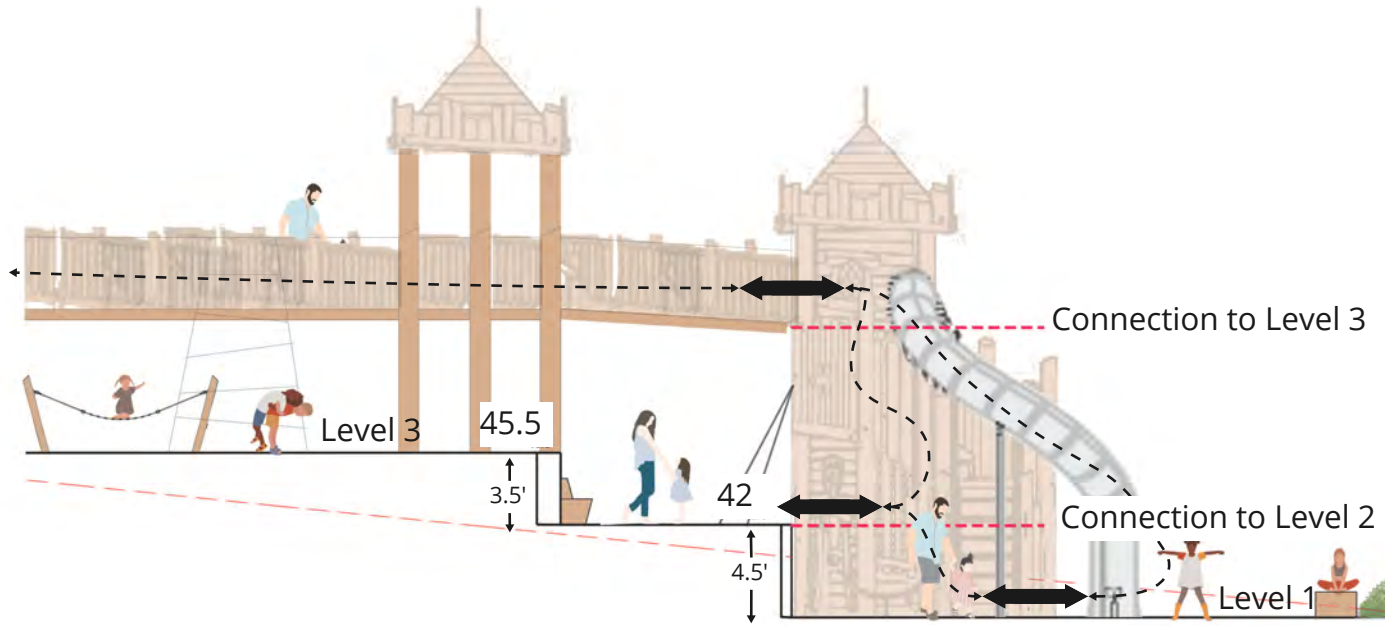


REFINEMENT GOALS:

- Provide connections to and through towers at three terrace levels
- Integrate accessible circulation into the overall play experience
- Retain the existing wall

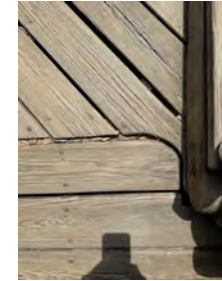
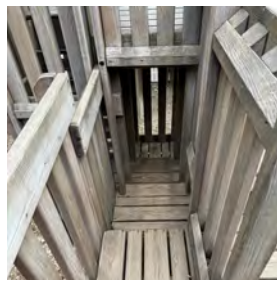
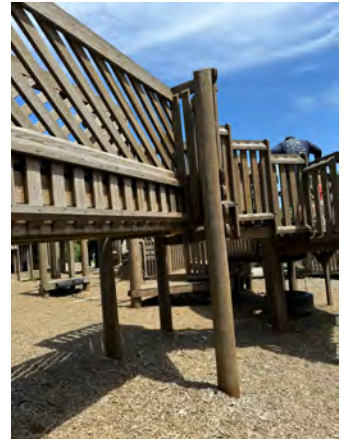


1"=10'-0"
0 5 10 20 30

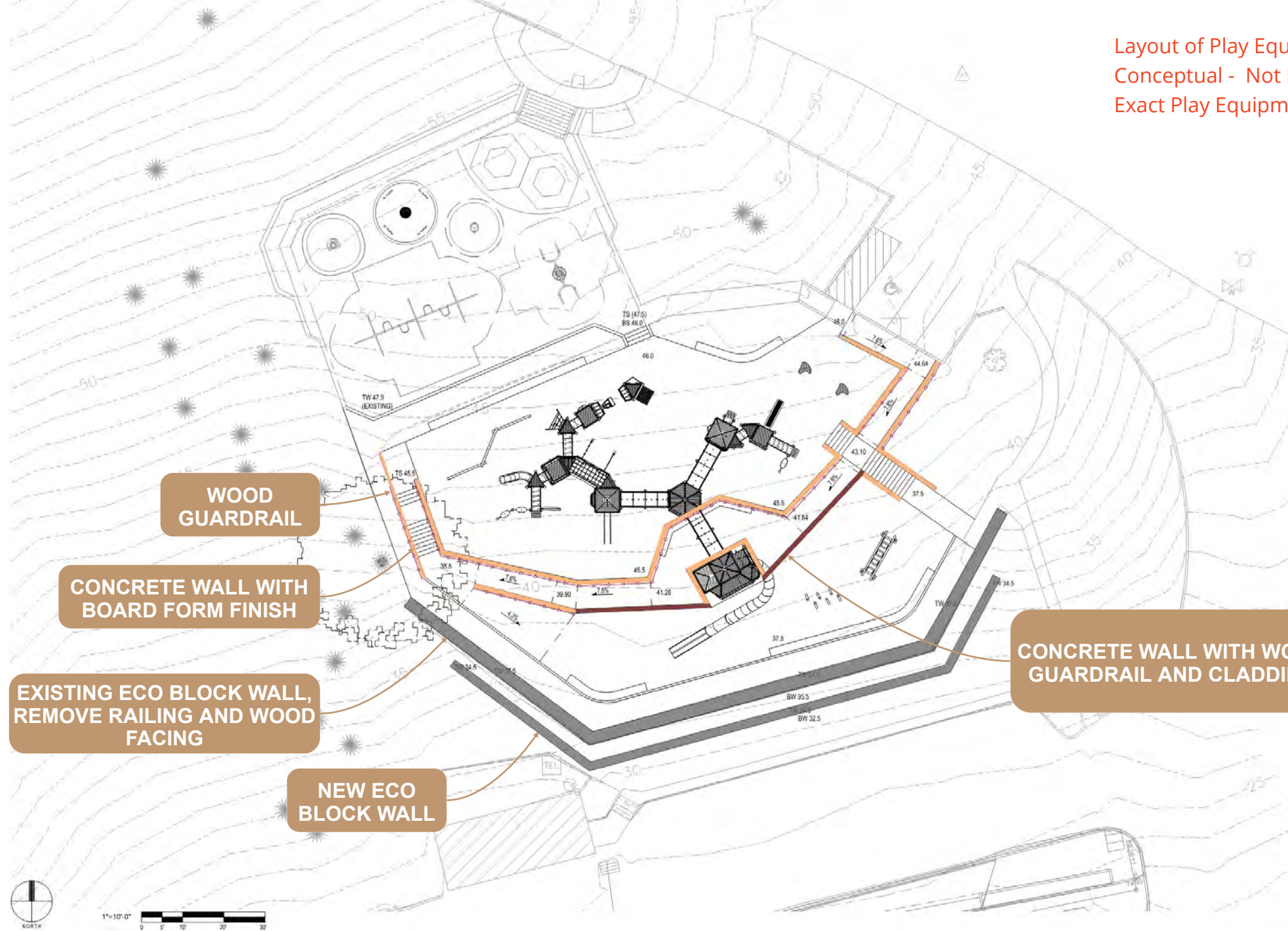


Conceptual Section - Not Reflective of Exact Play Equipment

**RAILING AND WALL DESIGN INSPIRED
BY THE EXISTING SITE WALLS AND PLAY
STRUCTURE**



Layout of Play Equipment is Conceptual - Not Reflective of Exact Play Equipment Locations



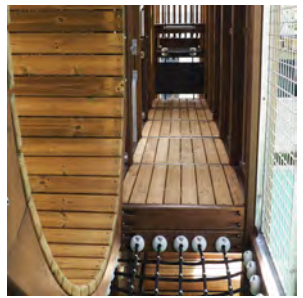
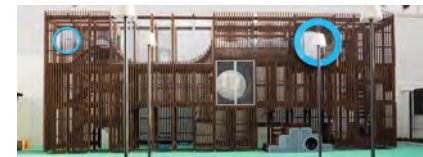
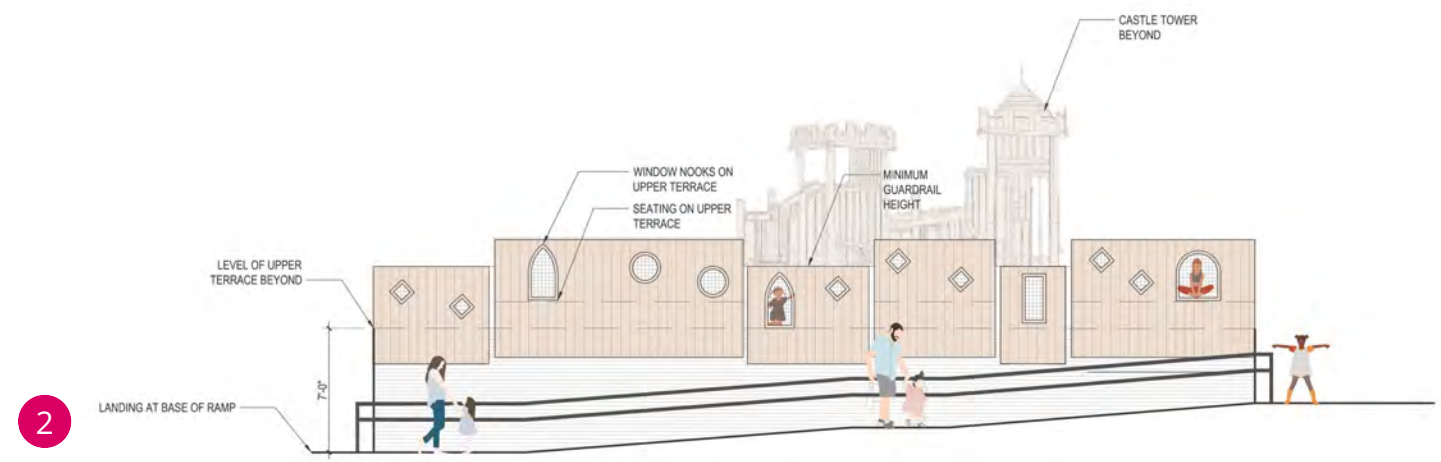
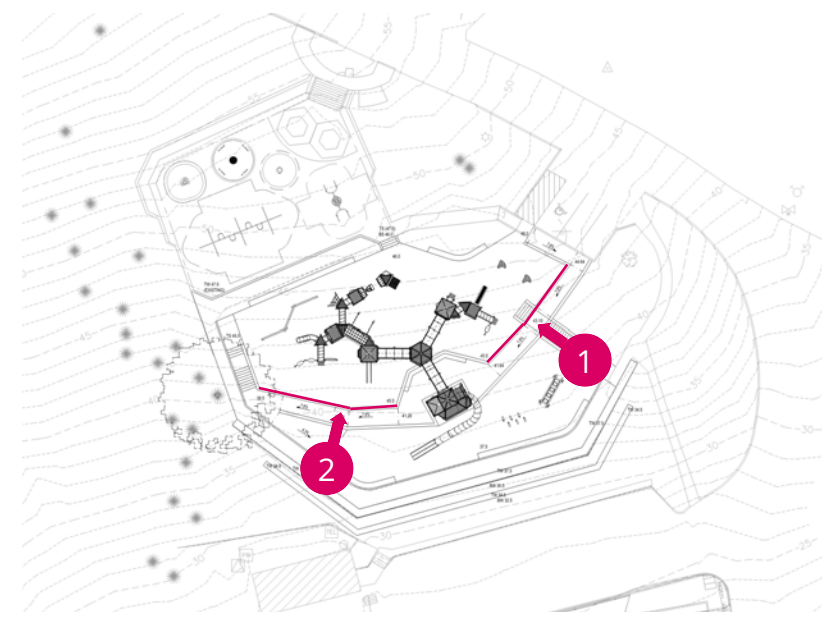
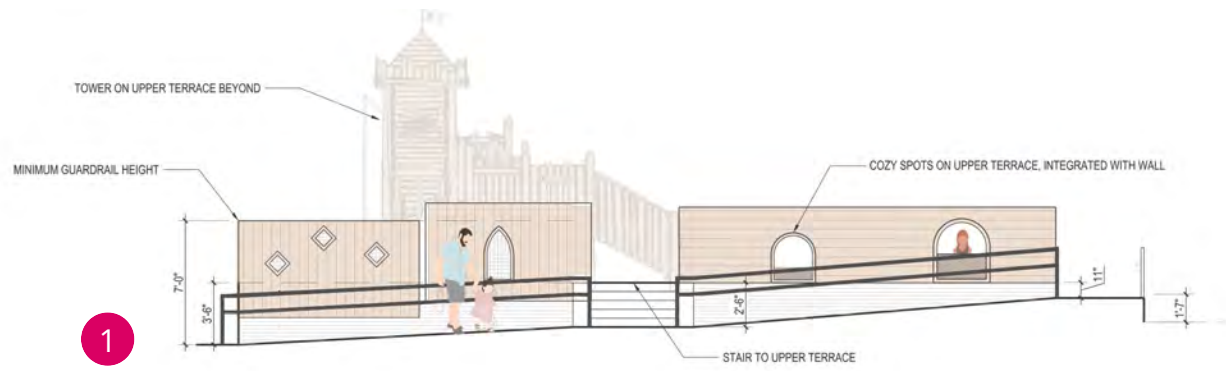
**WOOD
GUARDRAIL**

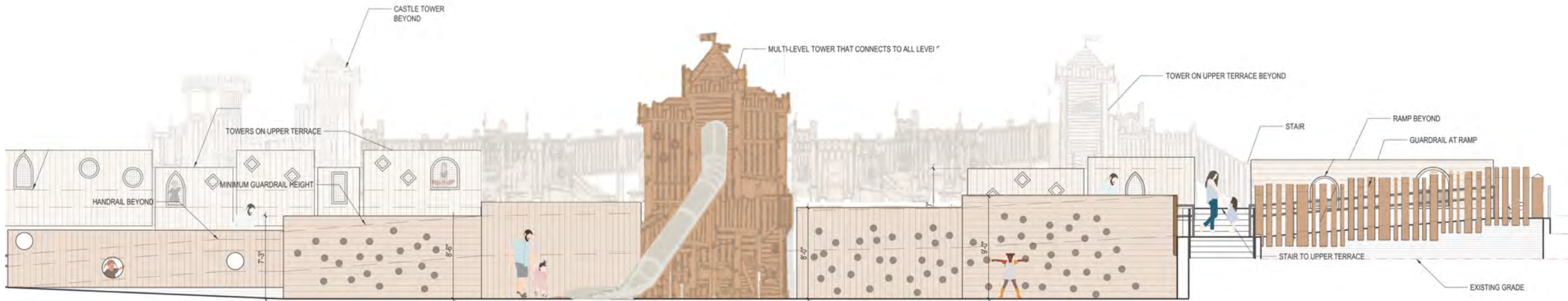
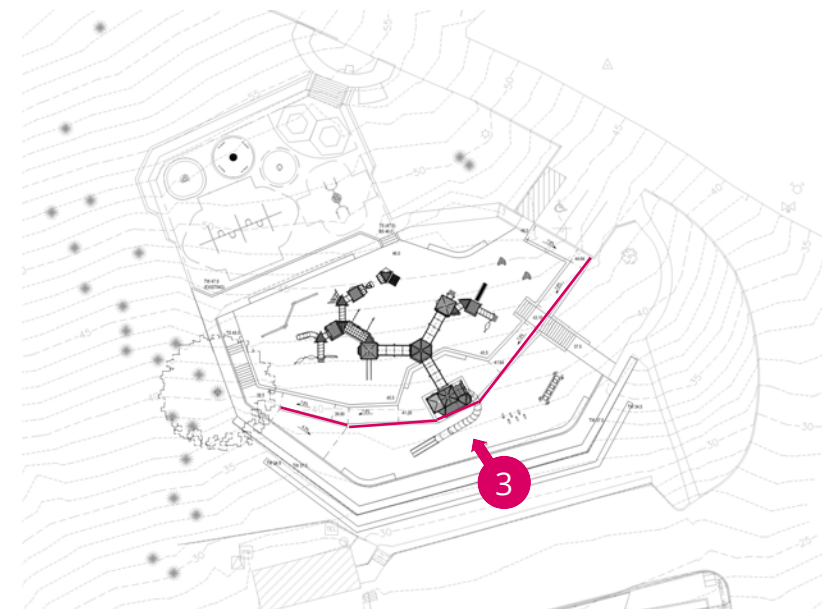
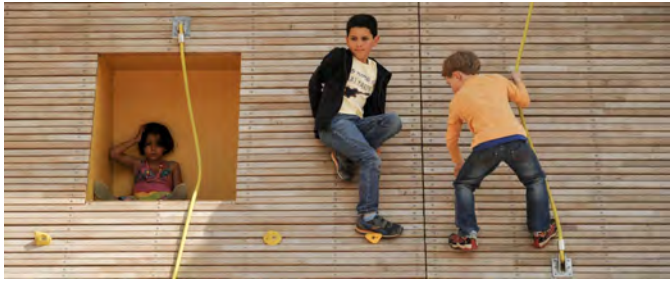
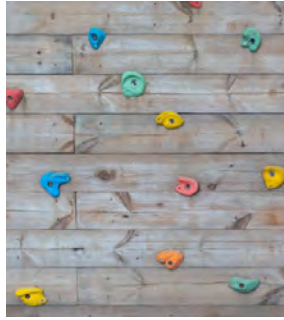
**CONCRETE WALL WITH
BOARD FORM FINISH**

**EXISTING ECO BLOCK WALL,
REMOVE RAILING AND WOOD
FACING**

**NEW ECO
BLOCK WALL**

**CONCRETE WALL WITH WOOD
GUARDRAIL AND CLADDING**





SANDCASTLE PLAY STRUCTURE

- Wood
- Seven towers and platforms connected with a variety of bridges and ramps
- Multiple slides of varying heights
- Variety of climbing nets to access towers
- Accessible transfer steps/platforms integrated into the structure





33'-6" Height

22'-6" Height
(Top of Slide)

9'-9" Height



Ramp Access to lower platforms

Climbing structures to access platforms

Accessible transfer platforms

Three slides of varying heights

30% Design Estimate:

Site Prep and Sitework for Terraces: \$2.3 million

Play Equipment: \$2.2 million

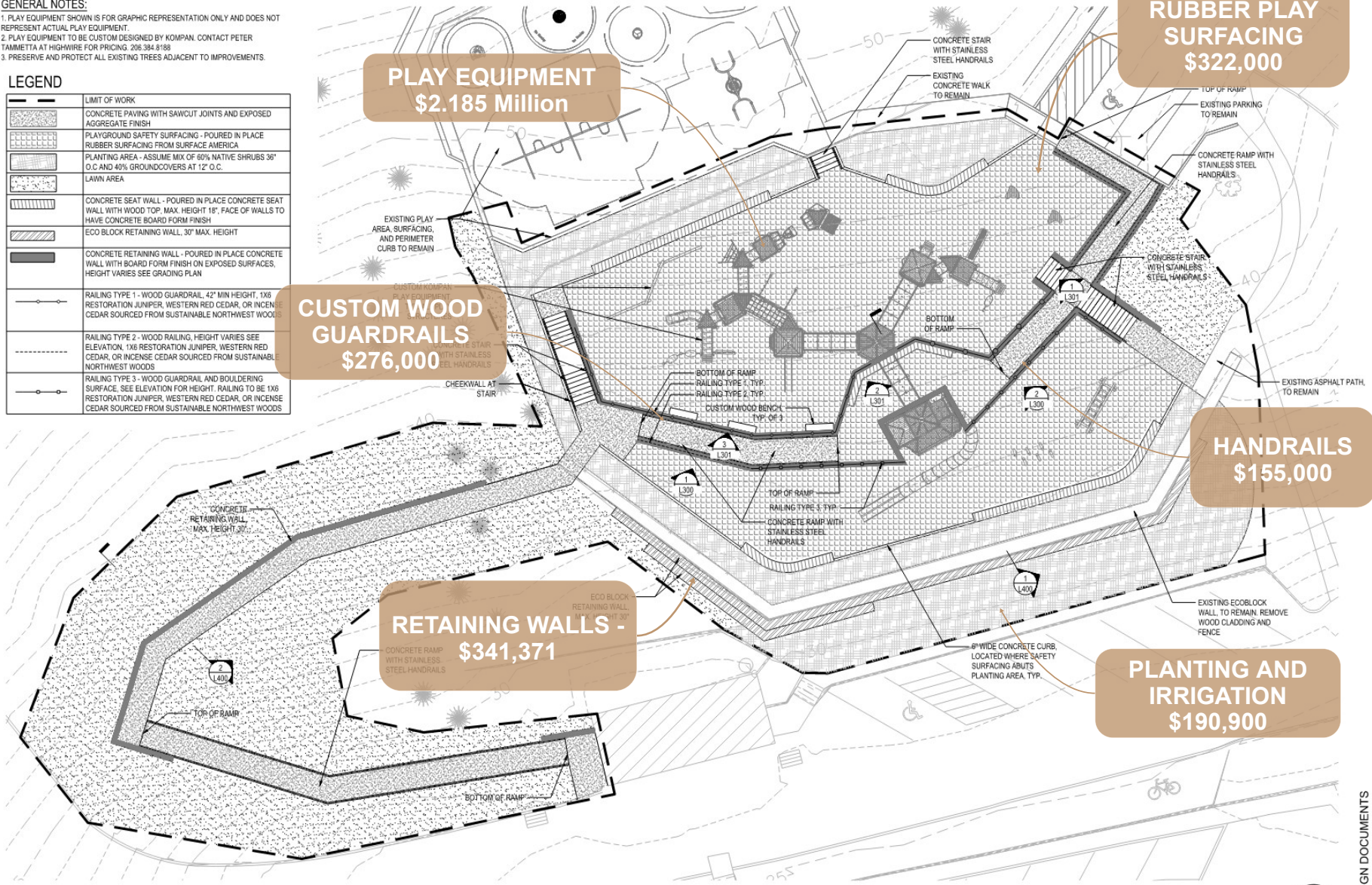
Total Estimate: \$4.5 million

GENERAL NOTES:

1. PLAY EQUIPMENT SHOWN IS FOR GRAPHIC REPRESENTATION ONLY AND DOES NOT REPRESENT ACTUAL PLAY EQUIPMENT.
2. PLAY EQUIPMENT TO BE CUSTOM DESIGNED BY KOMPAN. CONTACT PETER TAMMETTA AT HIGHWIRE FOR PRICING. 208.384.8188
3. PRESERVE AND PROTECT ALL EXISTING TREES ADJACENT TO IMPROVEMENTS.

LEGEND

Symbol	DESCRIPTION
[Dashed line]	LIMIT OF WORK
[Stippled pattern]	CONCRETE PAVING WITH SAWCUT JOINTS AND EXPOSED AGGREGATE FINISH
[Cross-hatched pattern]	PLAYGROUND SAFETY SURFACING - POURED IN PLACE RUBBER SURFACING FROM SURFACE AMERICA
[Dotted pattern]	PLANTING AREA - ASSUME MIX OF 80% NATIVE SHRUBS 36" O.C AND 40% GROUNDCOVERS AT 12" O.C.
[Blank area]	LAWN AREA
[Horizontal lines]	CONCRETE SEAT WALL - POURED IN PLACE CONCRETE SEAT WALL WITH WOOD TOP, MAX. HEIGHT 18". FACE OF WALLS TO HAVE CONCRETE BOARD FORM FINISH
[Diagonal lines]	ECO BLOCK RETAINING WALL, 30" MAX. HEIGHT
[Solid grey fill]	CONCRETE RETAINING WALL - POURED IN PLACE CONCRETE WALL WITH BOARD FORM FINISH ON EXPOSED SURFACES. HEIGHT VARIES SEE GRADING PLAN
[Line with circles]	RAILING TYPE 1 - WOOD GUARDRAIL, 42" MIN HEIGHT, 1X6 RESTORATION JUNIPER, WESTERN RED CEDAR, OR INCENSE CEDAR SOURCED FROM SUSTAINABLE NORTHWEST WOODS
[Line with circles]	RAILING TYPE 2 - WOOD RAILING, HEIGHT VARIES SEE ELEVATION, 1X6 RESTORATION JUNIPER, WESTERN RED CEDAR, OR INCENSE CEDAR SOURCED FROM SUSTAINABLE NORTHWEST WOODS
[Line with circles]	RAILING TYPE 3 - WOOD GUARDRAIL AND BOULDERING SURFACE, SEE ELEVATION FOR HEIGHT. RAILING TO BE 1X6 RESTORATION JUNIPER, WESTERN RED CEDAR, OR INCENSE CEDAR SOURCED FROM SUSTAINABLE NORTHWEST WOODS



PLAY EQUIPMENT
\$2.185 Million

RUBBER PLAY SURFACING
\$322,000

CUSTOM WOOD GUARDRAILS
\$276,000

HANDRAILS
\$155,000

RETAINING WALLS -
\$341,371

PLANTING AND IRRIGATION
\$190,900

